



Charging Tray CARica



or



Citroen: Jumper / **Dodge:** Ram / **Fiat:** Ducato / **Peugeot:** Boxer

Possible vehicle configurations:





1. Remove the original radio, pictures taken for example from the Fiat Ducato

1.1 Removal procedure:

Plug the extraction keys into the radio and snap them into place.
Pull the radio carefully out of its compartment.

1.2 Unscrew the metal cage:

Take off all 4 screws with a Torx-screwdriver.

1.1



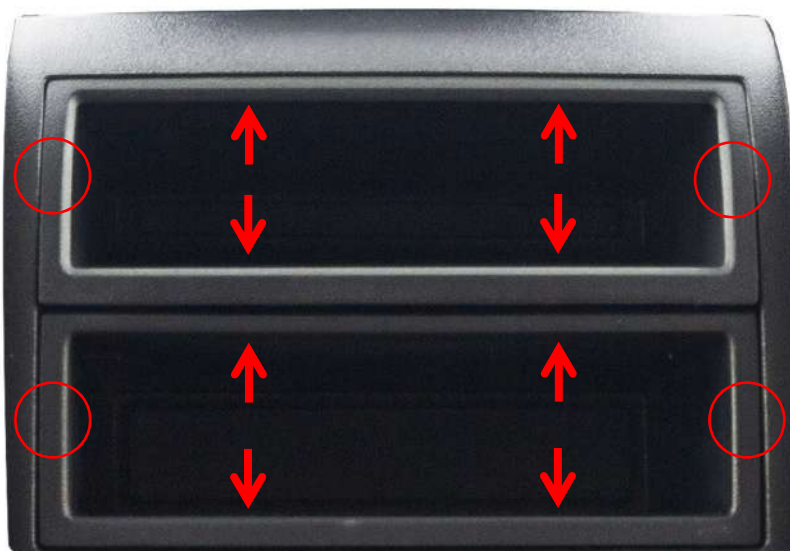
1.2



2. Remove the car audio pre-equipment parts, pictures taken for example from the Fiat Ducato

2.1 Removal procedure

The pocket trays can be pulled out with soft finger pressures on both sides at the same time (see red circles). Pull out at first the upper pocket tray, followed by the one below. Once the trays are removed unclip the fascia with a panel trim remover carefully (see red arrows).

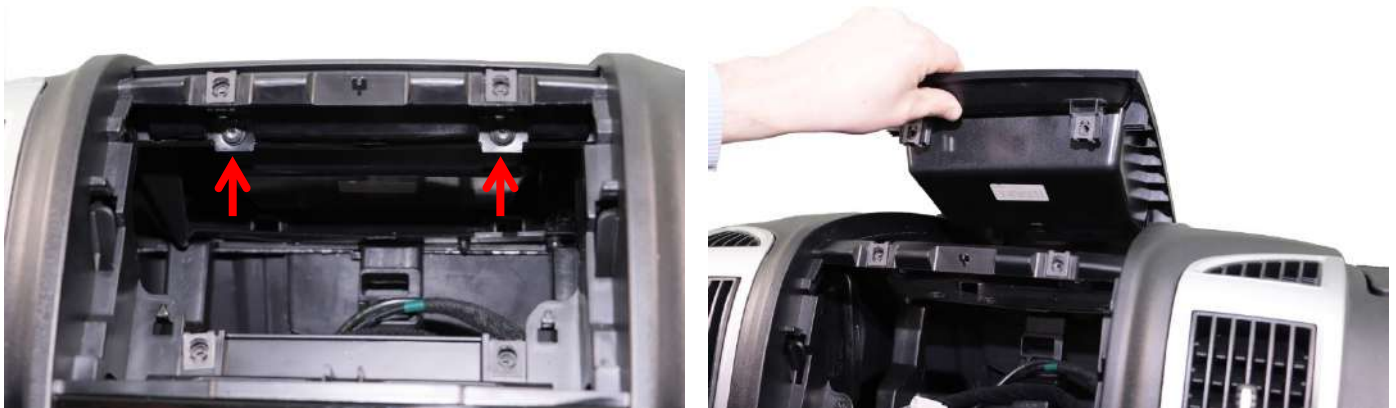




3. Remove the original tray

3.1 Removal procedure:

Unscrew the 2 front-screws as shown with the red arrows below.
After these screws has been taken off the tray can be simply released as shown in the pic below.



4. Remove the Paper pad- or Tablet holder

4.1 Removal procedure

Unscrew the 2 front-screws located underneath the tablet holder.
After that take off the ones placed in the rear (see red arrows below).
Open the tablet holder to reach these screws easier.
Once all screws have been removed it is easy to take this unit out.





5. Preparing the CARica installation

5.1 Install in first place the accessories:

Depending on the set configuration there is an extension wire with USB-AUX or USB-HDMI connections available to install. Pull the wire with its connectors through the hole. The plugs must be set flush with the charging unit. Use the enclosed screw ring from behind and tighten it safely by hand.

ATTENTION: It is recommended to fit the plugs in horizontal position!

Finally, the 2 retaining clips must be attached.



6. Installation of the CARica unit

6.1 Route the wires and re-fit the panels:

Unscrew the Torx-screw below the anti-slip-mat.

Unclip now with a panel trim remover carefully the plastics covering from the gear lever and the hazard switch panel. Install the T-cable harness with the harness connector of the cigarette lighter below the socket. Route the wire to the front of the radio dash-cut-out compartment.

TIPP: Cables should be secured in a way to make sure they won't fall back inside the dashboard.

Reassemble the plastic covers in reverse order now.







6.2 Insert CARica in place and connect it:

Put CARica into the recess in the original storage compartment. First insert the back side and then carefully push the front side in. Now fix the unit with the screws on the original points of the storage compartment, using the screws previously taken out.

Then connect the CARica cables with the one routed from the cigarette lighter connection.

(Connect red cable with red cable & black cable with black cable).



6.3 Function test:

It is highly recommended to do a final functionality test prior to complete the installation!

LED Display:

LED will light up in 3 different colours. The meanings are explained below.



BLUE



Ready to charge

GREEN



Unit is charging

RED



Fault

After a successful test, the dashboard can be reassembled in reverse order.